

## State Bird

In 1927, the **Mockingbird** was chosen the state bird. The bird is found in all parts of the State and it has a distinctive pretty song. It is a fighter for the protection of his home. A true Texan.



## State Flower



In 1901, the **bluebonnet** or buffalo clover was designated the state flower. The prairies were covered with bright and cheery bluebonnet flowers.

## State Tree

Since 1919 the **Pecan** was chosen as the state tree. Texas is a large producer of pecans. The pecan tree can live for a 1000 years and grow from 70 to 100 feet tall.



## State Fish

In 1989, the **Guadalupe Bass** became the state fish. It is only found in Texas.



## State Large Mammal

In 1995, the **Texas Longhorn Cattle** was chosen as the state large mammal. It is a breed of open range cattle that defined the western trail drive.



## State Small Mammal

In 1995, the **Armadillo** was named the state small mammal. The nine-banded armadillo is the only species of armadillo in North America.



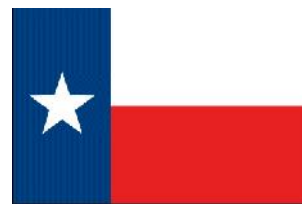
## State Reptile

In 1993, the **Horned Lizard** (*Phrynosoma cornutum*) became the state reptile. It is well known in the state of Texas.



## State Gemstone

In 1969, the **Blue Topaz** became the state gemstone. Blue Topaz is extremely rare and can be found in parts of Texas.



# Texas Lone Star State

# Color Texas's State Symbols



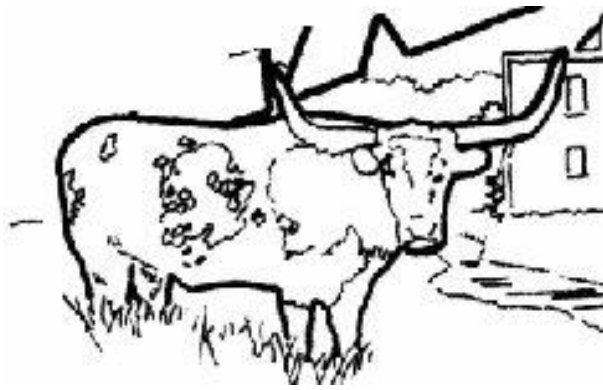
Texas State Bird: Mockingbird



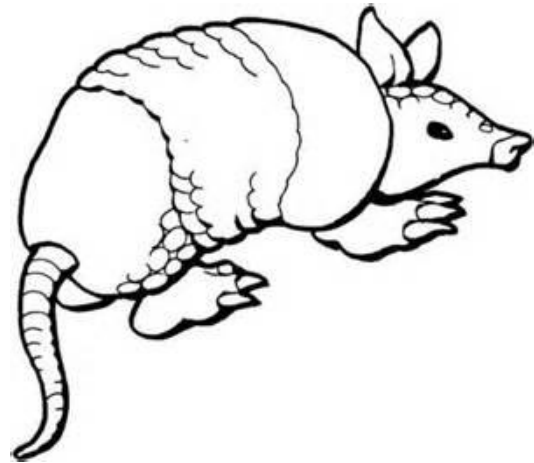
Texas State Tree: Pecan



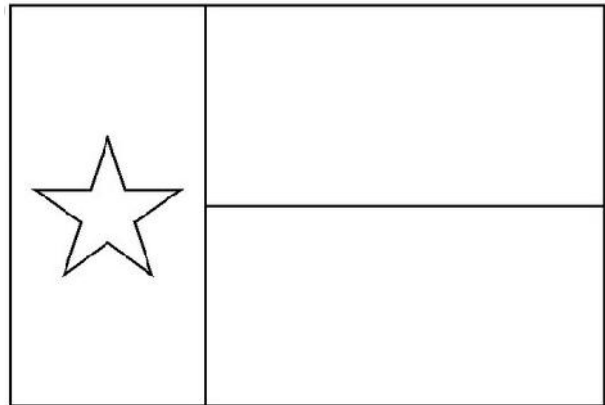
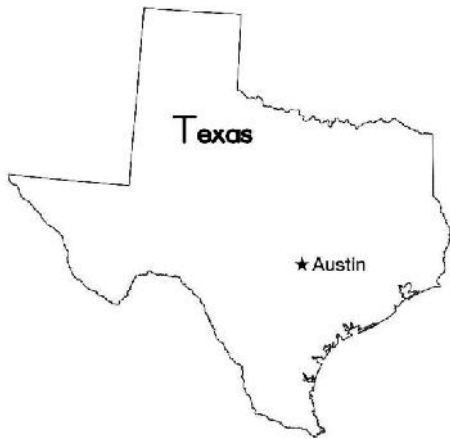
Texas State Flower: Bluebonnet



Texas State Large Mammal: Longhorn Cattle



Texas State Small Mammal: Armadillo



### Texas 28th State



Texas State Motto is friendship. Origin of Name: From a Native American word meaning friends.