

State Bird



In 1947, the Baltimore Oriole was chosen the state bird. The male's feathers are black and gold, the same colors as in the Calvert family shield.

State Flower

In 1918, the Black-eyed Susan was designated the state flower. It is a yellow daisy or cornflower with yellow petals and a dark brown center that blooms in late summer.



State Tree

In 1941, the White Oak was chosen the state tree. The most famous example of the White Oak was the Wye Oak at Wye Mills, Maryland. It was believed to be the largest and oldest white oak until it fell during a thunderstorm in 2002.



State Fish



In 1965, the Rockfish was chosen as the state fish. It is considered to be the most valuable fish in Maryland waters.

State Dog

In 1964, the Chesapeake Bay Retriever was designated the state dog. It is a working dog bred to recover waterfowl for hunters.



State Cat

In 2001, the Calico Cat was chosen the state cat. It was chosen because of its colors. They are the colors of Maryland's flag and founding families--red, black and white.



State Insect

In 1973, the Baltimore Checkerspot Butterfly was adopted as the state stone.



This rare butterfly lives in wet-meadow habitat. It has black and orange bordered wings speckled with white and orange spots.

A to Z Kids Stuff <http://www.aazkidsstuff.com>

State Gemstone

In 2004, Patuxent River Stone was adopted as the state gem. It is found only in Maryland, the Patuxent River Stone's colors of red and yellow reflect the Maryland State Flag.



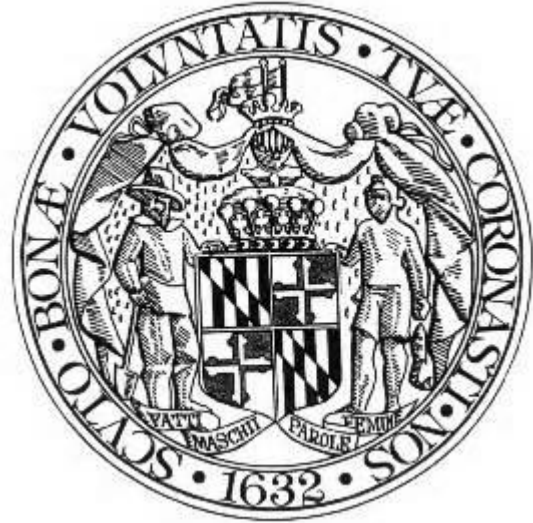
Maryland

The Old Line State

Color Maryland's State Symbols



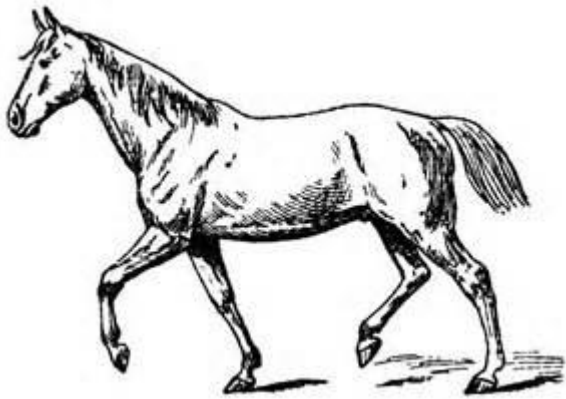
Maryland State Bird: Baltimore Oriole



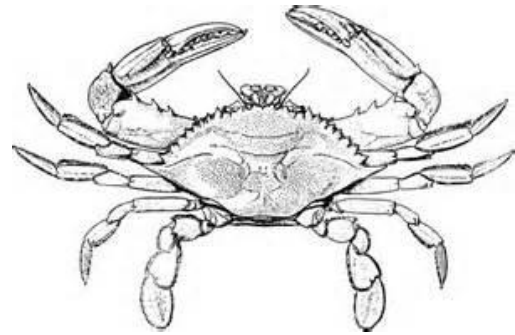
Maryland State Tree: White Oak



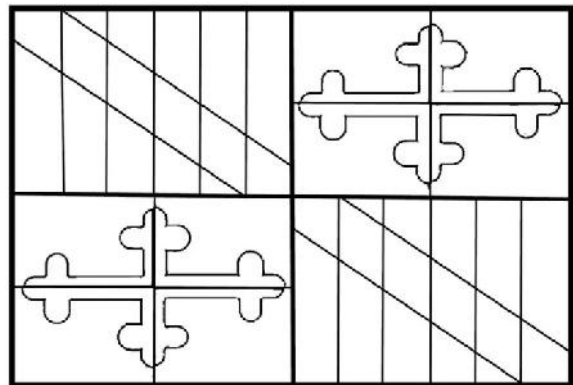
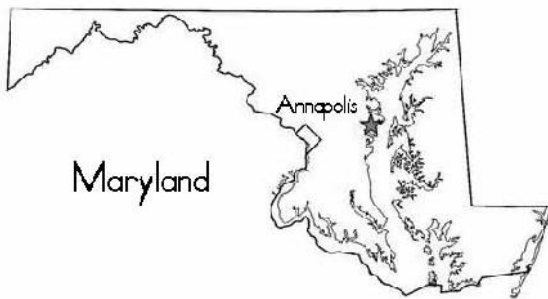
Maryland State Flower: Black-eyed Susan



Michigan State Horse: Thoroughbred Horse



Maryland State Crustacean: Maryland Blue Crab



Maryland 7th State



Maryland State Motto: Fatti maschii, parole femine
(Manly deeds, womanly words).

Origin of Name: In honor of Henrietta Maria
(Queen of Charles I of England)