

## State Bird



In 1943, the American Robin was chosen the state bird. Robins are of America's favorite songbirds.

## State Flower



In 1907, the Mountain Laurel was designated the state flower. It is perhaps the most beautiful of native American shrubs.

## State Tree



In 1947, the Charter Oak was chosen the state tree. It is a symbol of the spiritual strength and love of freedom which inspired our Colonial forebears in their militant resistance to tyranny.

## State Shellfish



In 1989, the Eastern Oyster was chosen as the state shellfish. It thrives naturally in Connecticut's tidal rivers and coastal embayments and is cultivated by the oyster industry in the waters of the Long Island Sound.

## State Animal



In 1975, the Sperm Whale was designated the state animal. It has played a significant role in the history of Connecticut.

## State Insect



In 1977, the European Praying Mantis was designated the state insect. It is not native to Connecticut but can be found throughout the state. The praying mantis is a beneficial insect for farmers.

## State Mineral



In 1977, the Almandine Garnet was adopted as the state mineral. Connecticut is one of the finest sources in the world of almandine garnet.

A to Z Kids Stuff <http://www.aozkidsstuff.com>

## State Ship



In 1983, USS Nautilus was adopted as the state ship. Built by Connecticut craftsmen and women, it was the world's first nuclear powered submarine.



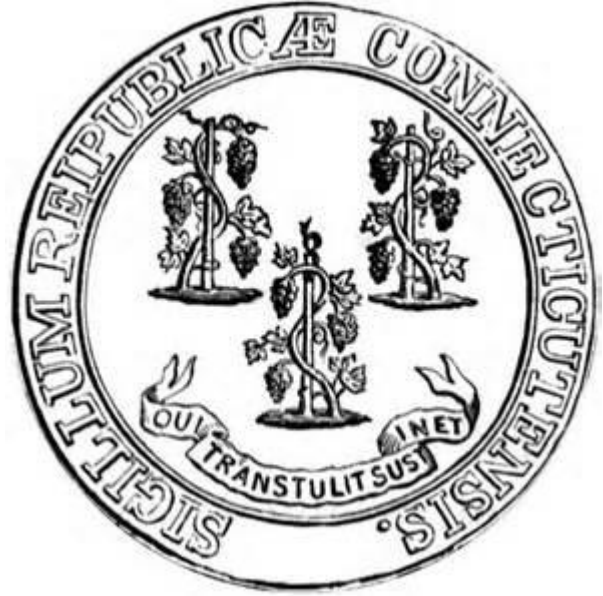
# Connecticut

The Constitution State

# Color Connecticut's State Symbols



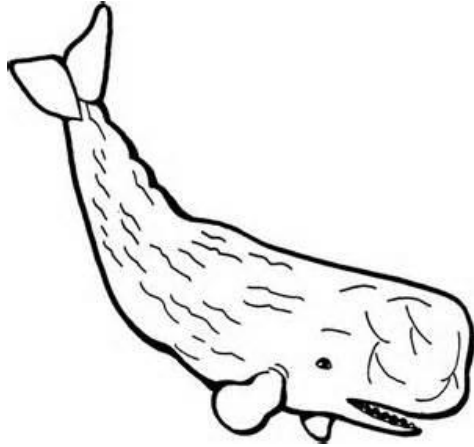
Connecticut State Bird: American Robin



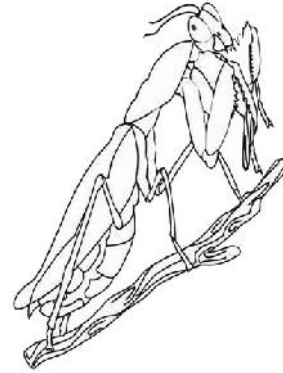
Connecticut State Tree: Charter Oak



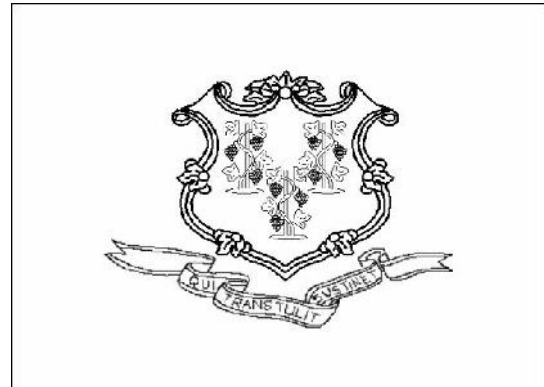
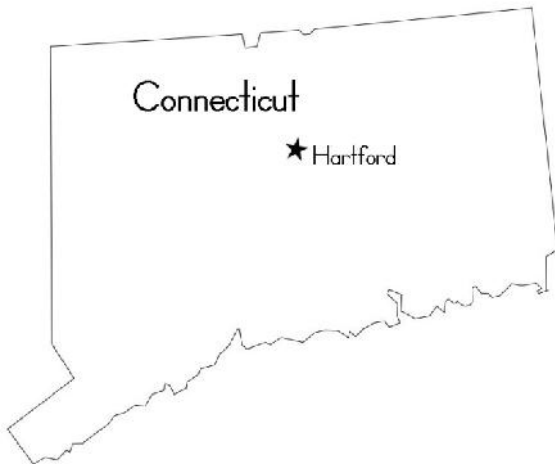
Connecticut State Flower: Mountain Laurel



Connecticut State Animal: Sperm Whale



Connecticut State Insect: Praying Mantis



### Connecticut 38th State



Connecticut State Motto: Qui Transtulit Sustinet  
(He Who Transplanted Still Sustains)

Origin of Name: From the Native American word "quinnehtukqut," meaning "beside the long tidal river."